

SUGGESTED USES OF *By Flowing Waters: Chant for the Liturgy*  
FOR SUNDAYS AND FEASTS WHICH FALL ON SUNDAYS  
ACCORDING TO THE *Roman Missal*  
AND TO THE *Graduale Romanum*

In the following the suggested uses which immediately follow the **bold heading** are drawn from the *Graduale Simplex*.

The recommendations which immediately follow the semicolons are drawn from the *Graduale Simplex* or are based on the *Roman Missal* and from the *Graduale Romanum*.

Indented under “chants between the readings” and labelled A, B, and/or C, there are recommendations for the responsorial psalm based on the *Lectionary* of the *Roman Missal*; if the A, B, or C is missing, it is an indication that there is no appropriate correspondence in *By Flowing Waters*. When it is suggested that a processional chant can be “used as a responsorial psalm,” this usually means that the antiphon is sung after each verse of the psalm (in the style of the *Graduale Simplex*) rather than after two or more verses (in the style of the *Lectionary*). The psalmist(s) sing(s) the antiphon, the assembly repeats it, the psalmist(s) sing(s) a verse of the psalm, the assembly repeats the antiphon, and so on, for at least five verses of the psalm.

Similarly, when it is suggested that a processional psalm can be “used as an alleluia psalm” by the use of a three-fold alleluia in the same mode as the psalm, this usually means that the alleluias are sung after each verse of the psalm (in the style of the *Graduale Simplex*) rather than after two or more verses (in the style of the *Lectionary*). The psalmist(s) sing(s) the alleluias, the assembly repeats them, the psalmist(s) sing(s) a verse of the psalm, the assembly repeats the alleluias, and so on, for at least five verses of the psalm.

Indented under “communion” and labelled A, B, and/or C, there are recommendations for what James McKinnon and other scholars call the “gospel communion,” that is, a text drawn from the very gospel pericope of the Sunday or feast. I have also provided recommendations in the spirit of the gospel pericope. My principles are four: Because communion is the fruit of the proclaimed word, especially the gospel, the communion song ideally “quotes” the proclaimed word, especially the gospel. It must at least be seasonally relevant, long enough and interesting enough to bear the weight of repetition. Its style needs to be processional (more inspiring of movement than of meditation) and responsorial (sharing the burden of the text and music alternately, between the assembly and the cantor, choir, or instruments). Its texts need to have a biblical density and richness to it so that it can reflect as *fulfillment* what the Liturgy of the Word announced as *promise*.

See James McKinnon, *The Advent Project: The Later-Seventh Century Creation of the Roman Mass Proper* (Berkeley: University of California Press, 2000), 328, 334–339, and 349–352; “The Roman Post-Pentecostal Communion Series,” *Cantus Planus: Papers Read at the Fourth Meeting, Pecs, Hungary, September 1990*, ed. László Dobszay (Budapest: Hungarian Academy of Sciences, 1992), 175–186; and “The Eighth-Century Frankish-Roman Communion Cycle,” *Journal of the American Musicological Society* 45 (1992), 179–227.

## ADVENT / CHRISTMAS

### First Sunday of Advent

Entrance: BFW 1 (To you, O Lord, I lift up my soul . . . ) with BFW 2 (optional doxology at BFW 630)

Chants between the readings:

- A BFW 12 (Let us go up rejoicing . . . ) or Alleluia Psalm 406 (Psalm 122); gospel acclamation: BFW 405 (Psalm 122) or gospel acclamation: BFW 4 (Psalm 85), verse 2
- B BFW 3 (Come and set us free . . . ) or Alleluia Psalm 5 (Psalm 85); gospel acclamation: BFW 4 (Psalm 85), verse 2
- C BFW 214 (The Lord will teach the lowly . . . ) or Alleluia Psalm 332 (Psalm 25); gospel acclamation: BFW 331 (Psalm 25) or gospel acclamation: BFW 4 (Psalm 85), verse 2

Offertory: BFW 6 (Those who hope in you . . . ) with BFW 7

Communion: BFW 8 (The Lord will give us what is good . . . ) with BFW 9 (optional doxology at BFW 634); or, as gospel communion, especially in Year A but also appropriate in Years B and C, BFW 292 (Keep awake and be ready . . . ) with BFW 293, with additional verses from BFW 295 reprinted for psalm tone IV E (mediant cadence: one accent with two preparatory syllables—abrupt mediation in verse 2, 4, 5, 7, 8, 10, 11, 12, and 13; final cadence: one accent with three preparatory syllables, optional doxology at BFW 630)

### Second Sunday of Advent (can use the same selections as on the First Sunday)

Chants between the readings:

- A BFW 40 (All the nations will come to serve him) or Alleluia Psalm 5 (Psalm 85); gospel acclamation: BFW 4 (Psalm 85)
- B Alleluia Psalm 5 (Psalm 85); gospel acclamation: BFW 4 (Psalm 85)
- C Alleluia Psalm 341 (Psalm 126); gospel acclamation: BFW 340 (Psalm 126)

Communion: BFW 267 (We sing to you, God . . . ) with BFW 410 (Psalm 147:12–20) reprinted for psalm tone VIII c (mediant cadence: one accent—abrupt mediation in verse 2, 4, 5, and 6)

- A and B BFW 496 (Be filled with the Holy Spirit . . . ) or BFW 497 (God will pour out the Spirit . . . ) or BFW 498 (Without measure is God's gift . . . ) with BFW 192 (as indicated on p. 299, optional doxology at BFW 634)
- C BFW 257 (Be glad, you heavens . . . ) with BFW 258, with additional verses from BFW 295 reprinted for psalm tone IV E (optional doxology at BFW 630)

### Third Sunday of Advent (can use the same selections as on the First Sunday or the Fourth Sunday)

Chants between the readings:

- A Alleluia Psalm 291 (Psalm 146); gospel acclamation: BFW 290 (Psalm 146)
- B BFW 413 (My soul gives glory to the Lord . . . )—(Communion Antiphon and Psalm are being used as a Responsorial Psalm)
- C BFW 136 (You will draw water . . . )

Offertory: BFW 17 (Lord, you have blessed your land) with BFW 18—(Communion Antiphon and Psalm are being used as Offertory Antiphon and Psalm, optional doxology at BFW 632) or BFW 292 (Keep awake and be ready . . . ) with BFW 293 (optional doxology at BFW 630)

Communion: BFW 267 (We sing to you, God . . . ) with BFW 410 (Psalm 147:12–20) reprinted for psalm tone VIII c (mediant cadence: one accent—abrupt mediation in verse 2, 4, 5, and 6 (optional doxology at BFW 634), or BFW 294 (The Spirit and the Bride . . . ) with BFW 295 (optional doxology at BFW 627)

## Fourth Sunday of Advent

Entrance: BFW 10 (Let the clouds rain down the just one . . . ) with BFW 11 (optional doxology at BFW 630)

Chants between the readings:

- A BFW 368 (The Lord is the king of glory), verses 1–7
- B BFW 113 (I will sing forever) or BFW 12 (Let us go up rejoicing . . . ) or Alleluia Psalm 14 (Psalm 80); gospel acclamation: BFW 327 sung with BFW 387, BFW 284, or BFW 429 or BFW 13 (Psalm 80)
- C Alleluia Psalm 14 (Psalm 80); gospel acclamation: BFW 327 sung with BFW 387, BFW 284, or BFW 429 or BFW 13 (Psalm 80)

Offertory: BFW 15 (Hail, Mary, full of grace . . . ) with BFW 16 (optional doxology at BFW 627)

Communion: BFW 17 (Lord, you have blessed your land) with BFW 18

- A gospel communion: BFW 316 (Joseph, son of David . . . ) with BFW 317 (optional doxology at BFW 633)
- B gospel communion: BFW 326 (I am the servant of the Lord . . . ) with BFW 327 or with BFW 363 pointed for psalm tone VIII c (optional doxology at BFW 634)
- C gospel communion: BFW 366 (How blest you are, O Virgin Mary . . . ) with BFW 367 (optional doxology at BFW 634)

## CHRISTMAS

**Christmas Vigil** (can use any of the Christmas suite, BFW 19–27)

Chants between the readings: BFW 113 (I will sing forever) or BFW 21 (Before the morning star I have begotten you) or Alleluia Psalm BFW 23 (Psalm 98); gospel acclamation: BFW 22 (Psalm 98)

Communion: BFW 316 (Joseph, son of David, fear not . . . ) with BFW 27 (Psalm 98, optional doxology at BFW 633) or BFW 461 (Psalm 24, (optional doxology at BFW 633) with the Psalm Tone VII a ending and with the addition of the following verses:

- 7 *Lift up* your heads, O gates! †  
and be lifted **úp**, O **ancient** doors! \*  
that the King of **glóry** may **come in**.
- 8 *Who is* the King of glory? †  
The LORD, **stróng** and **mighty**, \*  
the LORD, **mighty in** battle.
- 9 *Lift up* your heads, O gates! †  
and be lifted **úp**, O **ancient** doors! \*  
that the King of **glóry** may **come in**.
- 10 *Who is* this **Kíng** of **glory**? \*  
The LORD of hosts, he is the **Kíng** of **glory**.

Textual and musical adaptation copyright © 2002 by Paul F. Ford. All rights reserved. Used with Permission. English translation of the response is from *The Simple Gradual* © 1968 ICEL. All rights reserved. Used with Permission. English translation of the psalm is from *New Revised Standard Version* © 1989 Division of Christian Education of the National Council of Churches. All rights reserved. Used with Permission.

**Christmas Midnight** (can use any of the Christmas suite, BFW 19–27)

Entrance: BFW 19 (The Lord said to me . . . ) with BFW 20 (optional doxology at BFW 628)

Chants between the readings: BFW 21 (Before the morning star I have begotten you) or Alleluia Psalm BFW 23 (Psalm 98); gospel acclamation: BFW 22 (Psalm 98)

Offertory: BFW 24 (Be glad, you heavens . . . ) with BFW 25 (optional doxology at BFW 630)

Communion: BFW 36 (Mary treasured all these things in her heart) with BFW 37 (optional doxology at BFW 634)

**Christmas Dawn** (can use any of the Christmas suite, BFW 19–27)

Chants between the readings: Alleluia Psalm BFW 350, vss. 1, 6, 9, 10 (Psalm 97); or BFW 21 (Before the morning star I have begotten you) or Alleluia Psalm BFW 23 (Psalm 98); gospel acclamation: BFW 22 (Psalm 98)

Communion: BFW 36 (Mary treasured all these things in her heart) with BFW 37 (optional doxology at BFW 634)

**Christmas Day** (can use any of the Christmas suite, BFW 19–27)

Entrance: BFW 481 (Sing a new song to the Lord . . . ) with BFW 27 (optional doxology at BFW 633)

Chants between the readings: Alleluia Psalm BFW 23 (Psalm 98); Response BFW 21 (Before the morning star I have begotten you) or Alleluia Psalm BFW 23 (Psalm 98); gospel acclamation: BFW 22 (Psalm 98)

Communion: BFW 26 (All the ends of the earth . . . ) with BFW 27 (optional doxology at BFW 633), or BFW 79 (The Lord is my light and my salvation) with BFW 80 (optional doxology at BFW 634)

**The Holy Family**

Entrance: BFW 28 (Joseph is the husband of Mary . . . ) or BFW 29 (Joseph arose, took the child and his mother . . . ) with BFW 30 (optional doxology at BFW 627)

Chants between the readings:

A BFW 31 (I long for the courts of the Lord) or BFW 474 (They greatly delight in your commandments) or Alleluia Psalm BFW 33 or BFW 476; gospel acclamation: BFW 32 or BFW 475

Option B Alleluia Psalm created from the Alleluia of BFW 156 with verses one through nine of BFW 157

Option C BFW 31 (I long for the courts of the Lord)

Offertory: BFW 34 (The things that were said of Jesus . . . )

Communion:

A BFW 36 (Mary treasured all these things in her heart) with BFW 37 (optional doxology at BFW 634), or—if it has not already been used as the Entrance Antiphon—BFW 29 (Joseph arose, took the child and his mother . . . ) with BFW 354 with the psalm tone I g 4 ending, continuing, if needed, with verses 3 and 4 of BFW 468 (optional doxology at BFW 627)

Option B BFW 314 (Simeon received the child in his arms . . . ) with BFW 315, continuing with BFW 37, repointed to psalm tone VII a, if needed (mediant cadence: two accents; final cadence: two accents) (optional doxology at BFW 633)

Option C BFW 318 (Jesus went down with Mary and Joseph . . . ) with BFW 319, continuing with BFW 37, if needed (optional doxology at BFW 634)

**Second Sunday after Christmas** (can use any of the Christmas suite, BFW 19–27)

Chants between the readings: Alleluia Psalm created from BFW 410 (Psalm 147), repointed to Alleluia psalm tone C 1 (mediant cadence: one accent—abrupt mediation in verse 2, 4, 5, and 6; final cadence: one accent with one preparatory syllable) at BFW 406

Communion: BFW 26 (All the ends of the earth . . . ) with BFW 345, with the psalm tone VII a ending (optional doxology at BFW 633), or BFW 79 (The Lord is my light and my salvation) with BFW 80 (optional doxology at BFW 634)

**The Solemnity of Mary, Mother of God** (use BFW, pp. 252–254)

Chants between the readings: BFW 312 (Grace is poured upon your lips . . . ) — Offertory antiphon and psalm used as responsorial

**The Epiphany**

Entrance: BFW 38 (O come, let us worship him . . . ) with BFW 39 (optional doxology at BFW 634) or BFW 300 (Christ will extend his power . . . ) with BFW 301 (optional doxology at BFW 633)

Chants between the readings: BFW 40 (All the nations will come to serve him) or BFW 31 (I long for the courts of the Lord) or Alleluia Psalm BFW 42; gospel acclamation: BFW 41

Offertory: BFW 43 (The kings of all the world . . . ) with BFW 44 (optional doxology at BFW 627)

Communion: BFW 45 (We have seen his star . . . ) with BFW 46 (optional doxology at BFW 630)

**The Baptism of the Lord** (can use any of the Epiphany suite, BFW 38–46)

Entrance: BFW 458 (Justice you love . . . ) with BFW 459 (optional doxology at BFW 634), BFW 493 (With the spirit of the Lord, the whole world is filled, alleluia) with BFW 494 (optional doxology at BFW 634), or BFW 636 (Springs of Water) with verses from BFW 199 (see the performance note on p. 420; optional doxology at BFW 627).

Chants between the readings:

A Alleluia Psalm BFW 42; gospel acclamation: BFW 41

Option B BFW 136 (You will draw water joyfully . . . ); Alleluia Psalm BFW 42; gospel acclamation: BFW 41

Option C BFW 131 (Lord, send out your Spirit . . . )

Communion: BFW 496 (Be filled with the Holy Spirit . . . ) or BFW 497 (God will pour out the Spirit . . . ) or BFW 498 (Without measure is God's gift . . . ) with BFW 192 (as indicated on p. 299, optional doxology at BFW 634) or with BFW 394, repointed to psalm tone VIII c (mediant cadence: one accent—abrupt mediation in verse 1, 4, 5, 7, 9, and 10) with optional doxology at BFW 634

**LENT**

**Ash Wednesday**

Entrance: BFW 50 (The days have come . . . ) with BFW 51 (optional doxology at BFW 634), or BFW 48 (Have mercy on me, O God . . . ) with BFW 49 (optional doxology at BFW 634)

Chants between the readings: BFW 52 (Be merciful to me, O God) or BFW 53 (Deal kindly with us sinners . . . ); tract BFW 54 or gospel acclamation antiphon: BFW 65, 75, or 85

Blessing of the Ashes: BFW 55 (Take away, O God, my wickedness)

Offertory: BFW 57 (The Lord has come to help me) with BFW 58 (optional doxology at BFW 627)

Communion: BFW 442 (By flowing waters the Lord has planted . . . ) with BFW 443 (optional doxology at BFW 630), or BFW 59 (O give us, Lord, your help . . . ) with BFW 60 (optional doxology at BFW 628)

**First Sunday of Lent** (can use any of the Ash Wednesday suite, BFW 48–58)

Entrance: The Litany of the Saints BFW 663–675, recommended for the entrance song on this Sunday (see Performance Note on pp. 419 and 426–427) or BFW 61 (When you call to the Lord . . . ) with BFW 62 (optional doxology at BFW 633)

Chants between the readings:

- A BFW 52 (adding verses 3 and 4 and 17 from BFW 56) or BFW 55–56 (used as a responsorial psalm) or BFW 141 (Create a clean heart in me, O God or, if desired, Be merciful, O Lord, for we have sinned, set to the same melody with underlined syllables indicating slurs; add verses 3 and 4 from BFW 56, if desired); tract BFW 66 or gospel acclamation antiphon: BFW 75 with needed verses taken from BFW 56 recast into psalm tone V
- B BFW 63 (Beneath God's wings you will take refuge) or BFW 64 (Because I have sinned against you) or BFW 214 (The Lord will teach the lowly his ways); tract BFW 66 or gospel acclamation antiphon: BFW 75 with needed verses taken from BFW 56 recast into psalm tone V or BFW 65 with needed verses taken from BFW 96
- C BFW 63 (Beneath God's wings you will take refuge); tract BFW 66 or gospel acclamation antiphon: BFW 75 with needed verses taken from BFW 56 recast into psalm tone V

Offertory: BFW 67 (When you give alms . . . ) with BFW 68 (optional doxology at BFW 627)

Communion: BFW 69 (Lord, listen to my cry) with BFW 70 (optional doxology at BFW 634)

- A BFW 61 (When you call to the Lord . . . ) with BFW 62, with extra verses from Psalm 91 as needed (optional doxology at BFW 633)
- B BFW 50 (The days have come . . . ) with BFW 51 (optional doxology at BFW 631)
- C BFW 61 (When you call to the Lord . . . ) with BFW 62, with extra verses from Psalm 91 as needed (optional doxology at BFW 633)

**Second Sunday of Lent** (can use any of the Ash Wednesday suite, BFW 48–58)

Entrance: BFW 79 (The Lord is my light and my salvation) with BFW 80 (optional doxology at BFW 634), or BFW 239 (Turn to your people, Lord, have pity on us) with BFW 240 (optional doxology at BFW 634), or BFW 346 (Jesus took his disciples up the mountain . . . ) with BFW 347 (optional doxology at BFW 628)

Chants between the readings: BFW 214 (The Lord will teach the lowly his ways) or BFW 74 (Have mercy on us); tract BFW 76 or BFW 60 (used as a tract) or gospel acclamation antiphon: BFW 65 or 75

- A BFW 114 (True hearts are made for praise); tract BFW 512
- B BFW 532 (I will please the Lord . . . ) with BFW 533, used as a lectionary responsorial psalm; tract BFW 512
- C BFW 79 (The Lord is my light and my salvation) with BFW 80, used as a lectionary responsorial psalm; tract BFW 512

Offertory: BFW 434 (The just shall praise your name . . . ) with BFW 435 (optional doxology at BFW 627), or BFW 351 (Let us make here three tabernacles . . . ) with BFW 352 (optional doxology at BFW 630)

Communion: BFW 353 (Tell no one of the vision . . . ) with BFW 354 (optional doxology at BFW 627) or BFW 71 (My eyes are always on the Lord) with BFW 72 (optional doxology at

BFW 630) or BFW 79 (The Lord is my light and my salvation) with BFW 80 (optional doxology at BFW 634)

**Third Sunday of Lent** (can use any of the Ash Wednesday suite, BFW 48–58)

Entrance: BFW 71 (My eyes are always on the Lord) with BFW 72 (optional doxology at BFW 630)

Chants between the readings: BFW 73 (Lord God, you are my savior) or BFW 74 (Have mercy on us); tract BFW 76 or BFW 276 (used as a tract) or gospel acclamation antiphon: BFW 75  
B BFW 138 (Lord, you have the words . . . )  
C BFW 53 (Deal kindly with us sinners . . . )

Offertory: BFW 77 (Break your bread with the hungry . . . ) with BFW 78 (optional doxology at BFW 630)

Communion: BFW 79 (The Lord is my light and my salvation) with BFW 80 (optional doxology at BFW 634) or with BFW 117 pointed for psalm tone VIII c (optional doxology at BFW 634) or BFW 370 pointed for psalm tone VIII c (optional doxology at BFW 634) or BFW 208 (You have fed your people . . . ) with BFW 347 (optional doxology at BFW 628)

- A BFW 442 (By flowing waters the Lord has planted . . . ) with BFW 443 (optional doxology at BFW 630) or BFW 136 (You will draw water joyfully . . . ) used as a processional chant
- B BFW 403 (I will come to your house . . . ) with BFW 404 (optional doxology at BFW 630) or BFW 409 (My house shall be called . . . ) with BFW 410 (optional doxology at BFW 627)
- C BFW 50 (The days have come . . . ) with BFW 51 (optional doxology at BFW 631)

**Fourth Sunday of Lent** (can use any of the Ash Wednesday suite, BFW 48–58)

Entrance: BFW 81 (In my distress I called out to the Lord . . . ) with BFW 82 (optional doxology at BFW 633); or, in Year A, BFW 71 (My eyes are always on the Lord) with BFW 72 (optional doxology at BFW 630) or BFW 257 (Be glad, you heavens . . . ) with BFW 258 (optional doxology at BFW 630)

Chants between the readings: BFW 83 (The Lord is our help in time of distress) or BFW 84 (Lord, listen to my voice); tract BFW 76 or 86 or gospel acclamation antiphon: BFW 85  
A BFW 120 (In green pastures the Lord gives me rest)  
B BFW 137 (The vineyard of the Lord . . . )  
C BFW 647 (Taste and see . . . ); tract BFW 512

Offertory: BFW 87 (It is good to give thanks to the Lord our God) with BFW 88 (optional doxology at BFW 630)

Communion: BFW 89 (I will go to the altar of God . . . ) with BFW 90 (optional doxology at BFW 630)

- A gospel communion, BFW 79 (The Lord is my light and my salvation) with BFW 80 (optional doxology at BFW 634)
- B gospel communion, BFW 79 (The Lord is my light and my salvation) with BFW 80 (optional doxology at BFW 634)
- C gospel communion, BFW 69 (Lord, listen to my cry) with BFW 70 (optional doxology at BFW 634) or, if it was not used at the entrance, BFW 81 (In my distress I called out to the Lord . . . ) with BFW 82 (optional doxology at BFW 633)

**Fifth Sunday of Lent** (can use any of the Ash Wednesday suite, BFW 48–58)

Entrance: BFW 91 (O God, my God, rescue me . . . ) with BFW 92 (optional doxology at BFW 634), or BFW 89 (I will go to the altar of God . . . ) with BFW 90 (optional doxology at

BFW 630)

Chants between the readings: BFW 141 (Create a clean heart in me, O God) or BFW 93 (Lord, come to me defense) or BFW 94 (They have oppressed me from my youth); tract BFW 96 or BFW 98 (used as a tract) or gospel acclamation antiphon: BFW 95

A BFW 84 (Lord, listen to my voice); gospel acclamation antiphon: BFW 544 (I am the resurrection . . . ) with BFW 545, if not used at communion

B BFW 141 (Create a clean heart in me . . . ); gospel acclamation antiphon: BFW 456 (Whoever serves me must follow . . . ) with BFW 457, if not used at communion

C BFW 531 (Those who sow in tears . . . )

Offertory: BFW 217 (My heart is crushed within me . . . ) with BFW 218 (optional doxology at BFW 634), or BFW 97 (Judge my cause, O Lord . . . ) with BFW 98 (optional doxology at BFW 634)

Communion: BFW 99 (Father, if I must drink . . . ) with BFW 100 (optional doxology at BFW 634)

A gospel communion, BFW 544 (I am the resurrection . . . ) with BFW 545 (optional doxology at BFW 628)

B gospel communion, BFW 456 (Whoever serves me must follow . . . ) with BFW 457 (optional doxology at BFW 627)

C gospel communion, BFW 267 (We sing to you, God . . . ) with BFW 268 (optional doxology at BFW 634) or BFW 273 (O help me, Lord, and I shall be saved . . . ) with BFW 274 (optional doxology at BFW 634)

### **Passion Sunday**

Procession: BFW 101 (Hosanna to the Son of David . . . ) with BFW 102, BFW 104 (The children of the Hebrews . . . ) with BFW 105, BFW 106 (The Hebrew people . . . ) with BFW 107, BFW 108 (Glory and honor and praise . . . ), or BFW 109 (Hosanna in the highest . . . ) with BFW 110

Chants between the readings: BFW 93 (Lord, come to me defense) or BFW 94 (They have oppressed me from my youth); tract BFW 96 or gospel acclamation antiphon: BFW 95 or BFW 456 (used as a gospel acclamation antiphon)

Offertory: BFW 217 (My heart is crushed within me . . . ) with BFW 218, or BFW 97 (Judge my cause, O Lord . . . ) with BFW 98 (optional doxology at BFW 634)

Communion: BFW 99 (Father, if I must drink . . . ) with BFW 100

### **Chrism Mass**

Entrance: BFW 111 (Lord, you have given my heart . . . ) with BFW 112 (optional doxology at BFW 627) or BFW 116 (Justice you love . . . ) with BFW 117 (optional doxology at BFW 634)

Chants between the readings: BFW 113 (I will sing for ever) or BFW 114 (True hearts are made for praise)

Offertory: BFW 115 (O Redeemer . . . )

Communion: BFW 116 (Justice you love . . . ) with BFW 117 (optional doxology at BFW 634);  
gospel communion: BFW 418 (The Spirit of the Lord is upon me . . . ) with BFW 550 (optional doxology at BFW 628)

Transfer of the Holy Oils: BFW 115 (O Redeemer . . . )



## TRIDUUM

### **Holy Thursday**

Entrance: BFW 118 (We should glory in the cross . . . ) with BFW 119 (optional doxology at BFW 633), or BFW 202 (Priest for ever, Jesus Christ . . . ) with BFW 203 (optional doxology at BFW 627)

Chants between the readings: BFW 120 (In green pastures the Lord gives me rest) or BFW 204 (I will bless your name, O Lord)

The Washing of Feet: BFW 121 (A new commandment I give you) with BFW 122

Offertory: BFW 123 (Where we live as friends . . . )

Communion: BFW 124 (I will take the cup of salvation . . . ) with BFW 125 (optional doxology at BFW 628)

Transfer of the Blessed Sacrament: BFW 126/648 (Hail our Saviour's glorious Body)

### **Good Friday**

Chants between the readings: BFW 127 (Father, I put my life into your hands) or BFW 232 (My Savior and my God)

Veneration of the Cross: BFW 129 (O my people, what have I done to you) and/or BFW 130 (Your cross, O Lord . . . )

Communion: BFW 219 (One of the soldiers pierced his side . . . ) with BFW 220

### **The Easter Vigil**

Response to Reading One: BFW 131 (Lord, send out your Spirit . . . ) or BFW 132 (The earth is full of the goodness of the Lord)

Response to Reading Two: BFW 133 (Keep me safe, O God . . . )

Response to Reading Three: BFW 134 (Let us sing to the Lord . . . )

Response to Reading Four: BFW 135 (I will praise you, Lord . . . )

Response to Reading Five: BFW 136 (You will draw water joyfully . . . ) or BFW 137 (The vineyard of the Lord . . . )

Response to Reading Six: BFW 138 (Lord, you have the words . . . ) or BFW 139 (Let heaven and earth give glory to God)

Response to Reading Seven: BFW 140 (My soul is longing for You . . . ) or BFW 141 (Create a clean heart in me . . . )

Gospel acclamation: BFW 142

Offertory: BFW 145 (The Lord's right hand has shown its power . . . ) with BFW 146 (optional doxology at BFW 634) (optional doxology at BFW 634)

Communion: BFW 154 (Christ, our Paschal Lamb . . . ) with BFW 155 (optional doxology at BFW 629), or BFW 156 (Alleluia, alleluia, alleluia) with BFW 157 (optional doxology at BFW 632)

## EASTER

### **Easter Sunday**

Entrance: BFW 148 (Alleluia, This is the Day)

Chants between the readings: BFW 149 (Today is the day the Lord has made) or alleluia psalm BFW 150 (When Israel went out from Egypt)

Sequence: BFW 151 (Christians, praise the Paschal Victim!)

Offertory: BFW 152 (The earth trembled . . . ) with BFW 153 (optional doxology at BFW 634)

Communion: BFW 154 (Christ, our Paschal Lamb . . . ) with BFW 155 (optional doxology at BFW 629), or BFW 156 (Alleluia, alleluia, alleluia) with BFW 156 (optional doxology at BFW 632)

**Second Sunday of Easter** (can use any of the Easter suite I, BFW 158–166, or Easter suite II, BFW 167–174)

Entrance: BFW 416 (Peace be with you . . . ) with BFW 417 (optional doxology at BFW 628), if not used at communion, or BFW 167 (Sing a new song to the Lord . . . ) with BFW 168 (optional doxology at BFW 633)

Chants between the readings: Alleluia psalm BFW 160 or BFW 161, or BFW 169 or BFW 170; gospel acclamation BFW 162

A BFW 149 (Today is the day the Lord has made)

B BFW 149 (Today is the day the Lord has made)

C BFW 149 (Today is the day the Lord has made)

Communion: BFW 154 (Christ, our Paschal Lamb . . . ) with BFW 155 (optional doxology at BFW 629), or BFW 156 (Alleluia, alleluia, alleluia) with BFW 156 (optional doxology at BFW 632), or BFW 645 (with triple Alleluias and the optional doxology on p. 384)

A gospel communion, BFW 416 (Peace be with you . . . ) with BFW 417 (optional doxology at BFW 628)

B gospel communion, BFW 416 (Peace be with you . . . ) with BFW 417 (optional doxology at BFW 628)

C gospel communion, BFW 416 (Peace be with you . . . ) with BFW 417 (optional doxology at BFW 628)

**Third Sunday of Easter** (can use any of the Easter suite I, BFW 158–166, or Easter suite II, BFW 167–174)

Entrance: BFW 221 (Let all the earth cry out to you . . . ) adding the concluding alleluia from BFW p. 378, IV, with BFW 222 (optional doxology at BFW 630)

Chants between the readings: Alleluia psalm BFW 160 or BFW 161, or BFW 169 or BFW 170; gospel acclamation BFW 162

A BFW 133 (Keep me safe, O God . . . )

B BFW 539 (used as an alleluia psalm by adding any alleluia in Mode VIII G, such as BFW 162 or BFW 447)

C BFW 135 (I will praise you, Lord . . . )

Offertory: BFW 163 (For you I watch, O Lord . . . ) with BFW 164 (optional doxology at BFW 633) or BFW 171 (Cry out to God with a joyful voice . . . ) with BFW 172 (optional doxology at BFW 633)

Communion: BFW 173 (O sing to the Lord . . . ) with BFW 174 (optional doxology at BFW 628) or BFW 416 (Peace be with you . . . ) with BFW 417 (optional doxology at BFW 628), or BFW 165 (In Galilee you will see Jesus . . . ) with BFW 166 (optional doxology at BFW 633), BFW 210 (I am the living bread . . . ) with BFW 211 (optional doxology at BFW 627), or BFW 645 (with triple Alleluias and the optional doxology on p. 384)

C gospel communion, BFW 456 (Whoever serves me must follow . . . ), adding the concluding Easter season alleluia, with BFW 457 (optional doxology at BFW 627)

**Fourth Sunday of Easter** (Easter suite I, BFW 158–166, is especially suitable this Sunday, or Easter suite II, BFW 167–174)

Entrance: BFW 158 (I am the good shepherd . . . ) with BFW 159 (optional doxology at BFW 629), or BFW 212 (Learn from me for I am gentle and lowly of heart), adding the concluding

alleluia from BFW p. 378, III, with BFW 213 (optional doxology at BFW 629)

Chants between the readings: BFW 504 (used as an alleluia psalm by adding any alleluia in Mode VIII G, such as BFW 162 or BFW 447) or alleluia psalm BFW 160 or BFW 161, or BFW 169 or BFW 170; gospel acclamation BFW 162

A BFW 120 (In green pastures the Lord gives me rest)

B BFW 149 (Today is the day the Lord has made)

Offertory: BFW 163 (For you I watch, O Lord . . . ) with BFW 164 (optional doxology at BFW 633) or BFW 171 (Cry out to God with a joyful voice . . . ) with BFW 172 (optional doxology at BFW 633)

Communion: BFW 158 (I am the good shepherd . . . ) with BFW 159 (optional doxology at BFW 629), or BFW 212 (Learn from me for I am gentle and lowly of heart), adding the concluding alleluia from BFW p. 378, III with BFW 213 (optional doxology at BFW 629), or BFW 165 (In Galilee you will see Jesus . . . ) with BFW 166 (optional doxology at BFW 633), BFW 210 (I am the living bread . . . ) with BFW 211 (optional doxology at BFW 627), or BFW 645 (with triple Alleluias and the optional doxology on p. 384)

B gospel communion, BFW 158 (I am the good shepherd . . . ) with BFW 159 (optional doxology at BFW 629)

C gospel communion, BFW 544 (I am the resurrection . . . ) with BFW 545 (optional doxology at BFW 628)

**Fifth Sunday of Easter** (Easter suite II, BFW BFW 167–174, is especially suitable this Sunday)

Entrance: BFW 167 (Sing a new song to the Lord . . . ) with BFW 168 (optional doxology at BFW 633)

Chants between the readings: Alleluia psalm BFW 160 or BFW 161, or BFW 169 or BFW 170; gospel acclamation BFW 162

A Alleluia psalm BFW 388

B BFW 446 (In the Church of God I will praise you, Lord)

C Alleluia psalm BFW 285

Offertory: BFW 154 (Christ, our Paschal Lamb . . . ) with BFW 155

Communion: BFW 645 (with triple Alleluias and the optional doxology on p. 384)

A gospel communion, BFW 456 (Whoever serves me must follow . . . ), adding the concluding Easter season alleluia, with BFW 457 (optional doxology at BFW 627)

B gospel communion, BFW 483 (You did not choose me; I have chosen . . . ) with BFW 484 (optional doxology at BFW 633)

C gospel communion, BFW 123 (Where we live as friends in loving kindness)

**Sixth Sunday of Easter** (can use any of the Easter suite I, BFW 158–166, or Easter suite II, BFW 167–174)

Entrance: BFW 221 (Let all the earth cry out to you . . . ), adding the concluding alleluia from BFW p. 378, IV, with BFW 222 (optional doxology at BFW 630)

Chants between the readings: BFW 160 or BFW 161, or BFW 169 or BFW 170; gospel acclamation BFW 162

A BFW 223 (Give God glorious praise)

B Alleluia psalm BFW 23

C BFW 119 (repointed slightly from Mode VIIc to Mode VIIa used as an alleluia psalm by adding the alleluia in Mode VIIa of BFW 196)

Offertory: BFW 154 (Christ, our Paschal Lamb . . . ) with BFW 155 (optional doxology at BFW 629)

Communion: BFW 645 (with triple Alleluias and the optional doxology on p. 384)

- A gospel communion, BFW 121 (A new commandment I give you) with BFW 122 (optional doxology at BFW 629)
- B BFW 483 (You did not choose me; I have chosen . . . ) with BFW 484, or gospel communion, BFW 123 (Where we live as friends in loving kindness)
- C gospel communion, BFW 191 (The Spirit, who proceeds from my Father . . . ) with BFW 192 (optional doxology at BFW 634), or BFW 416 (Peace be with you . . . ) with BFW 417 (optional doxology at BFW 628)

### **The Ascension of the Lord**

Entrance: BFW 175 (Galilean men and women . . . ) with BFW 177 (optional doxology at BFW 633), or BFW 176 (Jesus has been taken up to heaven . . . ) with BFW 177 (optional doxology at BFW 633)

Chants between the readings:

- A Alleluia psalms BFW 178 or BFW 179
- B Alleluia psalms BFW 178 or BFW 179
- C Alleluia psalms BFW 178 or BFW 179

Offertory: BFW 180 (God mounts his throne . . . ) with BFW 181 (optional doxology at BFW 630)

Communion: BFW 182 (The Lord said to my lord . . . ) with BFW 183 (optional doxology at BFW 627)

### **Seventh Sunday of Easter** (can use any of the Ascension suite, BFW 175–183)

Entrance: BFW 79 (The Lord is my light and my salvation), adding the concluding alleluia from BFW p. 378, VIII, with BFW 80 (optional doxology at BFW 634), or BFW 176 (Jesus has been taken up to heaven . . . ) with BFW 177 (optional doxology at BFW 633)

Chants between the readings: Alleluia psalm BFW 216 or BFW 160 or BFW 161, or BFW 169 or BFW 170; gospel acclamation BFW 162

- A BFW 540 (I believe that I shall see the good things . . . ) with BFW 541 (used as a responsorial psalm) or alleluia psalm BFW 33; gospel acclamation: BFW 32
- B Alleluia psalms BFW 216 or BFW 379; gospel acclamation: BFW 215 or BFW 378
- C Alleluia psalms BFW 225 or BFW 350; gospel acclamation: BFW 224 or BFW 349

Offertory: BFW 171 (Cry out to God with a joyful voice . . . ) with BFW 172 (optional doxology at BFW 633)

Communion: BFW 182 (The Lord said to my lord . . . ) with BFW 183 (optional doxology at BFW 627) or BFW 645 (with triple Alleluias and the optional doxology on p. 384)

- A BFW 123 (Where we live as friends in loving kindness)
- B BFW 123 (Where we live as friends in loving kindness)
- C BFW 294 (The Spirit and the Bride . . . ) with BFW 295 (optional doxology at BFW 627)

### **Pentecost Vigil**

Entrance: BFW 184 (When the day of Pentecost had come . . . ) with BFW 185, or BFW 493 (With the spirit of the Lord . . . ) with BFW 494

Chants between the readings: BFW 131 (Lord, send out your Spirit . . . ) with the first two verses printed there and the following (verses 24, 35, 27–28, 29, 30a) set to the same tone, or alleluia psalm BFW 186 or BFW 187:

- 3 O LORD, how manifold *àre your works!* \*  
In wisdom you have **made** thèem all; \*
- 4 the earth is full *òf your creatures.* \*

Bless the LORD, O **my** sòul.

- 5 These all *look to you* \*  
to give them their food in **due** sèason;
- 6 when you give to them, they *gather it up*; \*  
when you open your hand, they are filled with **good** things.
- 7 When you take *away their breath*, \*  
they die and return to **their** dùst.
- 8 When you send *forth your spirit*, \*  
they are creatèd.

Textual adaptation copyright © 2002 by Paul F. Ford. All rights reserved. Used with Permission. English translation of the response is from *The Simple Gradual* © 1968 ICEL. All rights reserved. Used with Permission. English Translation of the psalm is from *New Revised Standard Version* © 1989 Division of Christian Education of the National Council of Churches. All rights reserved. Used with Permission.

If there is an extended vigil, then the following psalms may be used:

- I. After the reading from Exodus 11:1–9 is read: BFW 53 (Deal kindly with us sinners . . .), or, if an alleluia psalm is desired, BFW 311
- II. After the reading from Exodus 19:3–8a, 16–20b is read: BFW 63 (Beneath God’s wings you will take refuge), or, if an alleluia psalm is desired, BFW 62 used as an alleluia psalm with the alleluia taken from BFW 196
- III. After the reading from Ezechiel 37:1–14 is read: BFW 534 (Let me hear joy and gladness . . .) used as a responsorial psalm, or, if an alleluia psalm is desired, BFW 488
- IV. After the reading from Joel 3:1–5 is read: BFW 131 (Lord, send out your Spirit . . .) as set out above, or alleluia psalm BFW 186 or BFW 187
- V. After the reading from Romans 8:22–27 is read: alleluia psalm BFW 186 or BFW 187
- Offertory: BFW 189 (Confirm, O God, what you have done for us . . .) with BFW 190 (optional doxology at BFW 634)
- Communion: BFW 191 (The Spirit, who proceeds from my Father . . .) with BFW 192 (optional doxology at BFW 634), or BFW 496 (Be filled with the Holy Spirit . . .) or BFW 497 (God will pour out the Spirit . . .) or BFW 498 (Without measure is God’s gift . . .) with BFW 192 (as indicated on p. 299) (optional doxology at BFW 634)

### **Pentecost**

Entrance: BFW 184 (When the day of Pentecost had come . . .) with BFW 185, or BFW 493 (With the spirit of the Lord . . .) with BFW 494

Chants between the readings: BFW 131 (Lord, send out your Spirit . . .) with the first two verses printed there and the following (verses 24, 29–30, 31, 34) set to the same tone, or alleluia psalm BFW 186 or BFW 187:

- 3 O LORD, how manifold *àre your works!* \*  
In wisdom you have **made** thèm all; \*
- 4 the earth is full *òf your creatures.* \*  
Bless the LORD, O **my** sòul.
- 5 When you take *away their breath*, \*

they die and return to **their** dust.

- 6 When you send *forth your spirit*, \*  
they are creatèd.
- 7 May the glory of the LORD *endure forever*; \*  
may the LORD rejoice in **his** wòrks!
- 8 May my meditation be *pleasing to him*, \*  
for I rejoice in **the** LÒRD.

Textual adaptation copyright © 2002 by Paul F. Ford. All rights reserved. Used with Permission. English translation of the response is from *The Simple Gradual* © 1968 ICEL. All rights reserved. Used with Permission. English Translation of the psalm is from *New Revised Standard Version* © 1989 Division of Christian Education of the National Council of Churches. All rights reserved. Used with Permission.

Sequence: BFW 188

Offertory: BFW 189 (Confirm, O God, what you have done for us . . . ) with BFW 190 (optional doxology at BFW 634)

Communion: BFW 191 (The Spirit, who proceeds from my Father . . . ) or BFW 496 (Be filled with the Holy Spirit . . . ) or BFW 497 (God will pour out the Spirit . . . ) or BFW 498 (Without measure is God's gift . . . ) with BFW 192 (as indicated on p. 299) (optional doxology at BFW 634)

- A gospel communion, BFW 416 (Peace be with you . . . ) with BFW 417 (optional doxology at BFW 628)
- B gospel communion, BFW 416 (Peace be with you . . . ) with BFW 417 (optional doxology at BFW 628)
- C gospel communion, BFW 416 (Peace be with you . . . ) with BFW 417 (optional doxology at BFW 628)

## ORDINARY TIME

### Trinity Sunday

Entrance: BFW 193 (Blessed be the Trinity and the undivided Unity) with BFW 194 (optional doxology at BFW 628)

Chants between the readings: BFW 195 (Praise God, praise God in the highest) or alleluia psalm BFW 197; gospel acclamation BFW 196

- A BFW 198 used an alleluia psalm with the alleluia taken from BFW 251, repointed to Mode I g 2—if this psalm has not already been used at the entrance
- B Alleluia psalm BFW 388 (Psalm 33)
- C BFW 194 used an alleluia psalm with the alleluia taken from BFW 224—if this psalm will not be used at the preparation of the gifts

Offertory: BFW 198 (Blessed are you, O God, in the firmament . . . ) with BFW 199 (optional doxology at BFW 627)

Communion: BFW 200 (Praise the Lord of heaven for ever) with BFW 201 (optional doxology at BFW 627)

### The Body and Blood of Christ

Entrance: BFW 202 (Priest for ever, Jesus Christ the Lord . . . ) with BFW 203 (optional

doxology at BFW 627)

Chants between the readings: BFW 204 (I will bless your name, O Lord) or alleluia psalm BFW 206; gospel acclamation BFW 205; for the sequence BFW 207

A BFW 410 used as an alleluia psalm with the alleluia taken from BFW 251, repointed (if thought necessary) to I g 2)

B BFW 124 (I will take the cup of salvation . . .)—used as a responsorial psalm

C BFW 21 with the following antiphon:



You are a priest — for - ev - er, in the line of Mel - chi - zed - ek

Music copyright © 2002 by Paul F. Ford. All rights reserved. Used with Permission.

Offertory: BFW 208 (You have fed your people . . . ) with BFW 209 (optional doxology at BFW 628)

Communion: BFW 210 (I am the living bread . . . ) with BFW 211 (optional doxology at BFW 627) or BFW 124 (I will take the cup of salvation . . . ) with BFW 125 (optional doxology at BFW 628) or BFW 492 (Ask and you will receive . . . ) with BFW 493 (optional doxology at BFW 634)

A gospel communion, BFW 210 (I am the living bread . . . ) with BFW 211 (optional doxology at BFW 627)

### **The Sacred Heart of Jesus**

Entrance: BFW 212 (Learn from me for I am gentle and lowly of heart) with BFW 213 (optional doxology at BFW 629)

Chants between the readings: BFW 214 (The Lord will teach the lowly his ways) or alleluia psalm BFW 216; gospel acclamation BFW 215

A Alleluia Psalm BFW 216 (Psalm 122)

B BFW 136 (You will draw water joyfully . . . )

C BFW 120 (In green pastures the Lord gives me rest)

Offertory: BFW 217 (My heart is crushed within me . . . ) with BFW 217 (optional doxology at BFW 634)

Communion: BFW 219 (One of the soldiers pierced his side . . . ) with BFW 220 (optional doxology at BFW 633) or BFW 645, 646, or 647 (Taste and see . . . or Alleluia, . . . )

A gospel communion, BFW 212 (Learn from me for I am gentle and lowly of heart) with BFW 213 (optional doxology at BFW 629), if not used at the entrance

B gospel communion, BFW 219 (One of the soldiers pierced his side . . . ) with BFW 220 (optional doxology at BFW 633)

## General Note on the Sundays in Ordinary Time

Unlike the Roman Gradual which has proper antiphons and psalms for entrance, preparation, and communion for every Sunday of the year, *By Flowing Waters* has nine suites of antiphons and psalms for Ordinary Time which are thematic in character. The themes of the suites are:

- Ordinary Time I (BFW 221–229) — praise of the God at work in Jesus’ ministry
- Ordinary Time II (BFW 230–238) — trust and hope in God
- Ordinary Time III (BFW 239–247) — petitioning God for assistance
- Ordinary Time IV (BFW 248–258) — thanksgiving to God, especially in God’s house
- Ordinary Time V (BFW 259–268) — God’s justice
- Ordinary Time VI (BFW 269–274, as well as BFW 232–234 and 241–243) — God’s peace and loving kindness
- Ordinary Time VII (BFW 275–280, as well as BFW 250–253 and 262–264) — reverence and love for God
- Ordinary Time VIII (BFW 281–287, as well as BFW 645, 210–211, 413–414, and 123) — God is true to God’s name, “I will be with you”
- Ordinary Time IX (BFW 288–295, as well as BFW 133 and 140) — watchful joy for the Return of Christ

Ordinary Time I is especially effective on Sundays and weekdays in the time after the Christmas season and before Lent, and in the ninth and twenty-second weeks when the Matthean and Lukan versions of the beginnings of Jesus’ ministry are proclaimed in the weekday gospels. Similarly, Ordinary Time VIII is especially effective on Sundays and days when the readings underscore the ways in which God is true to God’s name, “I will be with you.” (Ordinary Time IX has a designated use, “the Last Weeks in Ordinary Time,” weeks thirty-two through thirty-four and, by extension, any time when the lectionary readings focus on the end times.) Because communion is the fruit of the proclaimed word, especially the gospel, the communion song ideally “quotes” the proclaimed word, especially the gospel. It must at least be seasonally relevant, long enough and interesting enough to bear the weight of repetition. Its style needs to be processional (more inspiring of movement than of meditation) and responsorial (sharing the burden of the text and music alternately, between the assembly and the cantor, choir, or instruments). Its texts need to have a biblical density and richness to it so that it can reflect as *fulfillment* what the Liturgy of the Word announced as *promise*.

**Second Sunday of the Year** (the suite of antiphons and psalms from Ordinary Time I (BFW 221–229) — praise of the God at work in Jesus’ ministry — is especially appropriate for Years A and B; for Year C consider using the suite of wedding psalms and antiphons, BFW 472–480)

Entrance: BFW 221 (Let all the earth cry out to you . . .) with BFW 222 (optional doxology at BFW 630); in Year C, BFW 472 (There was a wedding in Cana . . .) with BFW 473 (optional doxology at BFW 627)

Chants between the readings:

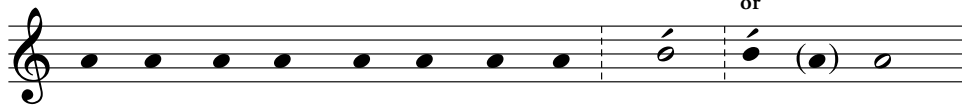
- A See the setting of Psalm 40 (which follows) or BFW 223 or alleluia psalm BFW 225;
- gospel acclamation: BFW 224

**Responsorial Psalm D 1 e**

**Psalm 40 (39V)**



(8a and 9a) 1, 3a, 6, 7, 8, 9



Y 1 I wait - ed pa - tient - ly for the **LORD**; \*



he in - clined to *me* and **heard** my cry.



R Here I am, Lord; — I come to do your will.

- 2 He put a new song in my **móuth**, \*  
a song of *pràise to our* God.
- 3 Sacrifice and offering you do not **desíre**, \*  
but you have given *mè an* open ear.
- 4 Burnt offering and sin offering you have not **required**. \*  
Then *I said*, "**Here** I am;
- 5 in the scroll of the book it is written of me. '  
I delight to do your will, O my **Gód**; \*  
your law *is within* my heart."
- 6 I have told the glad news of deliverance in the great congregátion; \*  
see, I have not restrained my lips, *às you know*, O LORD.

Textual and musical adaptation copyright © 2002 by Paul F. Ford. All rights reserved. Used with Permission. English translation of the response is from *The Simple Gradual* © 1968 ICEL. All rights reserved. Used with Permission. English Translation of the psalm is from *New Revised Standard Version* © 1989 Division of Christian Education of the National Council of Churches. All rights reserved. Used with Permission.

B Alleluia psalm 332, vss. 1–4, plus vss. 6 and 7 of BFW 240; See the setting of Psalm 40 (above) or BFW 223 or alleluia psalm BFW 225; gospel acclamation: BFW 224

C BFW 223 or alleluia psalm BFW 225; gospel acclamation: BFW 224

Offertory: BFW 226 (Cry out to God with joy . . . ) with BFW 227 (optional doxology at BFW 633)

Communion: BFW 228 (And all the people marvelled . . . ) with BFW 229 (optional doxology at BFW 627)

A gospel communion, BFW 335 (You, my child, shall go before the Lord . . . ) with BFW 335 (optional doxology at BFW 629)

B gospel communion, BFW 344 (You are Peter, the rock . . . ) with BFW 345 (optional doxology at BFW 633)

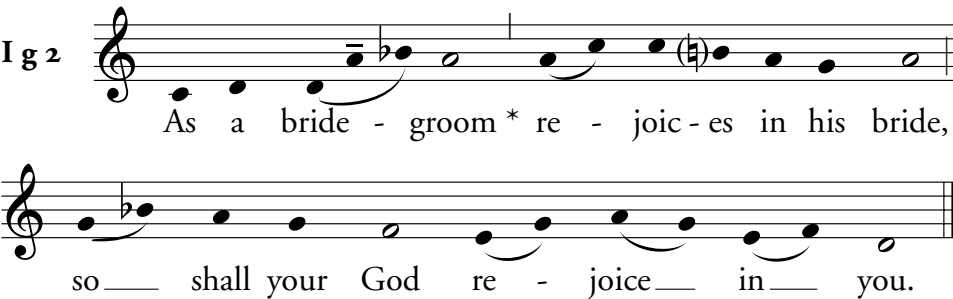
C gospel communion, BFW 472 (There was a wedding in Cana . . . ) with BFW 473 (optional doxology at BFW 627), if this is not used as today's entrance song or the following antiphon — suitable for entrance, preparation, or communion — with BFW

394, the Canticle of Isaiah:

### Antiphon

Isaiah 62:5

I g 2



As a bride - groom \* re - joic - es in his bride,  
so shall your God re - joice in you.

Music copyright © 2002 by Paul F. Ford. All rights reserved. Used with Permission.

## FEASTS OF THE LORD & SOLEMNITIES OF SAINTS

### The Presentation of the Lord

Blessing of Candles: BFW 302 (The Lord our God will come with power . . .)

Procession: BFW 304 (Christ is the light of nations and . . .) with BFW 305, and/or BFW 306  
(They brought him up to Jerusalem . . .) with BFW 307

Entrance: BFW 308 (Within your temple, we recall . . .)

Chants between the readings: BFW 368 (The Lord is the king of glory) or BFW 395 (For the king I will sing my song) or alleluia psalm BFW 311; gospel acclamation BFW 310

Offertory: BFW 312 (Grace is poured upon your lips . . .) with BFW 313

Communion: BFW 314 (Simeon received the child in his arms . . .) with BFW 315

### Joseph, Husband of Mary

Entrance: BFW 316 (Joseph, son of David, fear not . . .) with BFW 317, or BFW 440 (The just man will flourish . . .)

Chants between the readings: BFW 31 (I long for the courts of the Lord) or BFW 506 (I will sing for ever) or tract BFW 78 (without antiphon or intonation) or alleluia psalm BFW 33; gospel acclamation: BFW 32

Offertory: BFW 318 (Jesus went down with Mary and Joseph . . .) with BFW 319

Communion: BFW 320 (The Lord has put his faithful servant . . .) with BFW 321, or BFW 316 (Joseph, son of David, fear not . . .) with BFW 317

### The Annunciation of the Lord

Entrance: BFW 322 (An angel of the Lord brought good news . . .) with BFW 323, or BFW 10 (Let the clouds rain down the just one . . .) with BFW 11; in the Easter season, add the alleluia appointed, or available on p. 378, IVA

Chants between the readings: BFW 395 (For the king I will sing my song) or alleluia psalm BFW 397; gospel acclamation BFW 396

Offertory: BFW 324 (Hail, Mary, full of grace . . .)

Communion: BFW 326 (I am the servant of the Lord . . .)

### **The Birth of John the Baptist/Vigil and Day**

Entrance: BFW 328 (From my mother's womb . . . ) with BFW 329

Chants between the readings: BFW 330 (Let me never come to shame) or alleluia psalm BFW 332; gospel acclamation: BFW 331

Offertory: BFW 333 (The child who is born . . . ) with BFW 334, or BFW 440 (The just man will flourish . . . ) with BFW 441

Communion: BFW 335 (You, my child, shall go before the Lord . . . ) with BFW 336

### **Peter and Paul/Vigil and Day**

Entrance: BFW 337 (The Lord sent his angel to Peter . . . ) with BFW 338, or BFW 440 (The just man will flourish . . . ) with BFW 441

Chants between the readings: BFW 339 (In every part of the earth) or BFW 138 (Lord, you have the words . . . ) or alleluia psalm BFW 341; gospel acclamation: BFW 340

Offertory: BFW 342 (You will make them princes . . . ) with BFW 343

Communion: BFW 344 (You are Peter, the rock . . . ) with BFW 345

### **The Transfiguration of the Lord**

Entrance: BFW 346 (Jesus took his disciples up the mountain . . . ) with BFW 347, or BFW 79 (The Lord is my light and my salvation) with BFW 80

Chants between the readings: BFW 348 (His glory is great through your help) or alleluia psalm BFW 350; gospel acclamation: BFW 349

Offertory: BFW 351 (Let us make here three tabernacles . . . ) with BFW 352

Communion: BFW 353 (Tell no one of the vision . . . ) with BFW 354

### **The Assumption of Blessed Virgin Mary/Vigil**

Entrance: BFW 465 (With joy and gladness, they enter . . . )—used as an entrance song by changing the text from “they enter” to “she enters,” with BFW 466; or BFW 355 (Mary has been taken up to heaven . . . ) with BFW 356

Chants between the readings: BFW 357 (Come, my beloved, receive your crown) or alleluia psalm BFW 359; gospel acclamation: BFW 358

Offertory: BFW 411 (O holy mother and virgin . . . ) with BFW 412, or BFW 360 (Today, O Mary, in your glorious triumph . . . ) with BFW 361

Communion: BFW 362 (All ages will call me blessed . . . ) with BFW 363

### **The Assumption of Blessed Virgin Mary/Day**

Entrance: BFW 355 (Mary has been taken up to heaven . . . ) with BFW 356

Chants between the readings: BFW 357 (Come, my beloved, receive your crown) or alleluia psalm BFW 359; gospel acclamation: BFW 358

Offertory: BFW 360 (Today, O Mary, in your glorious triumph . . . ) with BFW 361

Communion: BFW 362 (All ages will call me blessed . . . ) with BFW 363

### **The Exaltation of the Holy Cross**

Entrance: BFW 118 (We should glory in the cross . . . ) with BFW 119

Chants between the readings: Alleluia psalm BFW 206 or BFW 368 (The Lord is the king of glory) or alleluia psalm BFW 370; gospel acclamation: BFW 369

Offertory: BFW 371 (The Lord is exalted on the cross . . . ) with BFW 372

Communion: BFW 373 (By the sign of the cross, deliver us . . . ) with BFW 374

### **All Saints**

Entrance: BFW 384 (Love the Lord, all you saints . . . ) with BFW 385

Chants between the readings: BFW 386 (Sing the Lord's praise with all the saints) or alleluia psalm BFW 388; gospel acclamation: BFW 387

Offertory: BFW 389 (My saints will have joy and happiness . . . ) with BFW 390

Communion: BFW 391 (Happy are the peacemakers . . . ) with BFW 392

### **All Souls**

Entrance: BFW 499 (Lord, grant that they may have . . . ) with BFW 500, or BFW 501 (Lord, grant that they may have . . . ) with BFW 502, or BFW 503 (Open for me the gates of justice . . . ) with BFW 504

Response

as in Lectionary: Psalm 23 BFW 120 (In green pastures the Lord gives me rest) or BFW 529 (Remember me, O Lord my God . . . ); or Psalm 25 BFW 214 (The Lord will teach the lowly his ways); or Psalm 27 BFW 79 (The Lord is my light and my salvation) or BFW 540 (I believe that I shall see the good things . . . )

as response in BFW: BFW 505 (My soul is longing for you, O God) or BFW 506 (I will sing for ever) or BFW 507 (Let us go up rejoicing to the house of the Lord)

as alleluia psalm in BFW: Psalm 63 BFW 510; Psalm 114 BFW 509; Psalm 130 BFW 511

as gospel acclamation in BFW: BFW 508

Offertory: BFW 513 (My redeemer lives . . . ) or BFW 514 (You, Lord, led me into freedom . . . ) with BFW 515; or BFW 516 ([He (She/They) will live . . . ) or BFW 517 (Life is changed, not ended . . . ) with BFW 518; or BFW 519 (In the presence of the angels . . . ) with BFW 520

Communion: BFW 521 (May light eternal shine on them . . . ) with BFW 522, or BFW 523 (I heard a voice from heaven, saying . . . ) with BFW 524, or BFW 525 (Lord, give me a place in the land of the living) with BFW 526

### **Dedication of St. John Lateran**

Entrance: BFW 403 (I will come to your house . . . ) with BFW 404

Chants between the readings: BFW 31 (I long for the courts of the Lord) or alleluia psalm BFW 406; gospel acclamation: BFW 405

Offertory: BFW 407 (The house of the Lord is firmly founded . . . ) with BFW 408

Communion: BFW 409 (My house shall be called . . . ) with BFW 410

### **Immaculate Conception**

Entrance: BFW 393 (Mary, you are all beautiful . . . ) with BFW 394

Chants between the readings: BFW 395 (For the king I will sing my song) or alleluia psalm BFW 397; gospel acclamation: BFW 396

Offertory: BFW 324 (Hail, Mary, full of grace . . . ) with BFW 325, or BFW 398 (The Lord, the Most High . . . ) with BFW 399

Communion: BFW 400 (Glorious things are told of you . . . ) with BFW 401